

LADIES SECTION

TROPHIES AND COMPETITION

RULES

28th August 2024

Contents

Costs and Prizes	2
Qualifying Cards for entering the Trophy Competitions	3
Addison Mixed Foursomes	4
Addison Rabbits Trophy	5
Birdie Trophy	6
Berendt Rose Bowl	7
Captain vs Vice Captain Trophy	8
Captains' Past and Present Day	9
Club Championship	10
Summer Eclectic	11
Winter Eclectic	11
Gilly Bogey Trophy	12
Goldsmith Bowl	13
Golfer of the Year	14
Granny Trophy	15
Hall Candlestick Foursomes	16
Harvest Medal	17
Jay Oldknow Mixed Knockout Trophy	18
Ladies' invitation	20
Summer Knockout Lady President's Cup	21
Lady Captain's Day	22
Land Salver	23
Medal of Medals	24
Midsummer Madness	25
Millennium Plate incorporating Nielsen Putting Trophy	26
Mixed Open	27
Most Improved Lady Golfer	28
Pearce Trophy	29
Queen's Platinum Jubilee Memorial Cup	30
Rosemary Ward Putting Trophy	31
Scott Salver	32
Sidi Scott Bud Vase	32
Sunday Trophy	33
Ladies Summer pairs knockout	34
Ladies Super Seniors Championship	35
Williams Cup	36
Winter Knockout	37
Withey Cup	38

Costs and Prizes

Trophy	Entry Fee	Money Prize
Addison Trophy	£ 3.50 per person	Dependent on number of entries
Addison Rabbits Trophy	£3.50	Dependent on number of entries
Brendt Rose Bowl	£3.50	As per Qualifiers prize distribution rules
Birdie Tree	£7.00	Trophy Only
Club Championship	£7.00	50% of Fees to be split 35% to each winner, 15% to each runner up.
Captains Past and Present	If in Stableford	As per Qualifiers prize distribution rules
Summer & Winter Eclectic	£ 3.50 each	4 winners payout. 50% of fee split as 1st 50%, 2nd 25%, 3rd 15% and 4th 10%
Gilly Bogey	£3.50	Financial payments to division winners, second and third as per qualifier rules
Goldsmith Bowl	-	Trophy Only
Golfer of the Year	-	Trophy Only
Granny Trophy	If in Stableford	As per Qualifiers prize distribution rules
Hall Candlestick Foursomes	£3.50 each player	50% of fees to be split 2/3rd to winners and 1/3rd to runners up.
Harvest Trophy	£3.50	As per Qualifiers prize distribution rules
Jay Oldknow Mixed	£3.50 each player	Engraved glasses to keep provided by the Ladies committee alongside the trophy. Runners up receive a prize as agreed by the Ladies Committee
Lady Presidents Cup Summer Knockout	£3.50	Prize money to winner and runner up
Super Senior Competition	-	Trophy & Replica
Lady Captains Day	TBA	1st prize from Lady Captain. Remaining prizes from entrance fee and depend on size of field
Land Salver	£3.50 per person	No prize money. Land Salver presented at end of competition. All proceeds go to the Captains chosen Charities in their year
Medal of Medals	Earned place	Trophy only
Midsummer Madness	£3.50	Lady Captain buys the prizes using money from
Millenium Plate incorporating Nielson Putting Trophy	£3.50	Trophy to person with best medal score. Trophy to person with least number of putts. Remaining prizes awarded based on the agreed financial awards
Most Improved Golfer	-	Trophy only
Pearce Trophy	£ 3.50 per person	Teams agreed dependent on number of people signing up. Dependent on whether 3 or 4 per team, it will be 2 best scores and there are 6 scores per person. This is a trophy and there are no cash prizes
Queens platinum Jubilee Memorial Cup	£3.50	As per Qualifiers prize distribution rules
Rosemary Ward Putting Trophy	-	Trophy only
Scott Salver & Bud Vase	£3.50	As per Qualifiers prize distribution rules
Summer Pairs knockout - M Pickering & L Baldry	£3.50	Trophy
Sunday Trophy	-	Trophy only
Williams Cup	£5.00 adult and Juniors do not pay	Trophies for team and prizes bought from entry fees and shop may contribute.
Winter knockout Spirit of Ecstasy (Jaimeson)	£3.50	1st pizes and runners up dependent on number of entries
Withey Cup	£3.50 per person	Trophy presented at AGM and prizes dependent on number of entries

Qualifying Cards for entering the Trophy Competitions

In order to enter any **Ladies Trophy Competition**, all players must have played at least 5 (five) qualifying rounds in the previous twelve months.

The exceptions to this are:

No Qualifiers Required for :

- a) **Super Seniors Championship**
- b) **Addison Rabbits**
- c) **Addison Mixed Trophy**
- d) **Birdie Trophy**
- e) **Most Improved Lady Golfer,**
- f) **Medal of Medals,**
- g) **Golfer of the Year,**
- h) **Midsummer Madness,**
- i) **Captains past & Present,**
- j) **Lady Captain vs Vice Captain,**
- k) **Eclectics**
- l) **Ladies Invitation**
- m) **Summer Pairs knockout – (I. Baldry & M. Pickering)**

Ladies Championship where all players must have played at least 5 (five) qualifying rounds since the start of the current golfing year (ie: December onwards).

In order to enter any **Mixed Trophy Competition**, all ladies must have played at least 3 (three) qualifying rounds in the previous twelve months.

In the case of any extreme weather or other conditions that make playing unfeasible then the Competition Secretary or Captain can temporarily cease play or amend the rules for that day.

Information correct as of 1/12/2023

Addison Mixed Foursomes
Trophy donated by Doreen Addison

DATE:

Annual: September

FORMAT:

18-hole mixed Foursomes strokeplay. Stableford. Played on Blyth Course. Ladies red tees and Men white tees. Played off Ladies stroke index. 50% of combined team course handicap.

ELIGIBILITY:

Ladies/Men.

HANDICAP RESTRICTIONS:

For trophy competitions the handicap limit is set by Ladies Committee
Ladies Red Tees. Handicap index: 32.4-33.2. Course handicap 36
Men White tees. Handicap index: 24.0-24.7. Course handicap 28
Golfers with higher handicaps may enter trophy competition but will be capped at maximum course handicap 36 (Ladies) and 28 (Men).

SCORE BALANCING SET BY IG FOR THIS COMPETITION:

Red tees: stroke adjustment + 0.5
Par 72, CR 71.8, SR 124
White tees: stroke adjustment 0
Par 72, CR 71.3, SR 130

SIGN UP AS SHOWN ON IG:

Competition entry opens three weeks before competition date.

OTHER INFORMATION:

If a player must withdraw from the competition due to illness or family emergency, then it is acceptable for another player to take their place on that day.



Winners: Addison mixed foursome Claret Jug Trophy. Trophy presented main AGM.

Prize money: Winners & Runner up dependent on number of entries, credited to golf fees account.

Addison Rabbits Trophy
Trophy donated by Doreen Addison

DATE:

Annual: 1st April – 30th September

FORMAT:

18-hole Match play, knock out competition. If the match is drawn after 18 holes, play must continue to a 'sudden death result' Played on Blyth Course. Red tees. 100% difference of course handicap

ELIGIBILITY:

Higher handicap ladies.
No qualifiers required. Handicap index: 27.8 – 41.4.

HANDICAP RESTRICTIONS:

For Addison Rabbits Trophy the handicap limit is set by Ladies Committee and agreed by Doreen Addison.
Ladies Red Tees.

SIGN UP AS SHOWN ON IG:

Competition entry opens four weeks before competition date and shuts one week before first round

OTHER INFORMATION:

It is the equal responsibility of both competitors to contact their opponent(s) to arrange the match by mutual agreement, not less than **10 days** before the closing date for the round. They must give **at least 3 dates**, one of which must be a weekend, preferably spaced throughout the allowed time period.

Each match must be completed by midnight of the appropriate round closing date, with no extensions allowed unless allowed by the Lady Captain for health reasons. If it is not possible to complete a match by the date shown, both competitor(s) will be scratched from the competition unless one competitor(s) voluntarily concedes.

Winner: Addison Rabbits' Trophy and replica trophy. Prize money: winner and runner up depending on entry numbers and credited to golf fees account



Birdie Trophy
Trophy donated by Ladies' Section

DATE:

Annual: 1st December – 30th November

FORMAT:

IG records all birdies or better in any EG competition, individual trophy competition or singles knockout (ball must be holed out to count). Any sub-par scores will be awarded points on IG golf and recorded on the IG birdie tree. Points for par: 0, Points for birdie: 1, Points for eagle: 2, Points for albatross: 3

ELIGIBILITY:

All ladies are automatically entered

HANDICAP RESTRICTIONS:

None

ENTRY FEE:

None

OTHER INFORMATION:

Mixed tee individual competitions do not count towards Birdie Trophy.

Winner is player with most birdies or better in year from:

1st December to 30th November

Trophy: Birdie Trophy



Berendt Rose Bowl
Trophy Donated by Jean Berendt

DATE:

Annual: October.

FORMAT:

18-hole strokeplay. Stableford. Played alongside the October stableford on Blyth course. Red tees.

HANDICAP RESTRICTIONS:

For trophy competitions the handicap limit is set by Ladies Committee Ladies Red Tees. Handicap index: 32.4 – 33.2. Course handicap 36, however, ladies playing in the stableford competition will not have a course handicap restriction. Ladies with higher handicaps may enter trophy competition but will be capped at maximum course handicap of 36.

SIGN UP AS SHOWN ON IG:

Competition entry opens 3 weeks before competition date.

OTHER INFORMATION:

Winner: Berendt Rose bowl and replica trophy.

Prize money, dependant on number of entries, awarded to winners and runners up of bronze and silver division of Stableford competition, and credited to golf fees account in accordance with the current prize settings for the Stableford Competition.

IG competition settings will show winners of the medal competition, results for the trophy competition will be manually capped and final results calculated by the Ladies' Competition Secretary.



Captain vs Vice Captain Trophy

DATE:

Annual: April

FORMAT:

Type of game to be decided by the Captain/Vice Captain. Includes prizes for costumes. Divide into teams of 3. Individual Stableford score combined as a team score.

ELIGIBILITY:

All ladies.

HANDICAP RESTRICTIONS:

No Handicap restrictions

SIGN UP AS SHOWN ON IG:

Competition entry opens 4 weeks before competition date.

OTHER INFORMATION:

Trophy as the prize for the team.

Overall winner, best dressed and nearest the pins.



Captains' Past and Present Day

Trophy Donated by: Rosie Ward

DATE:

Annual: June if possible

FORMAT:

18-hole strokeplay. Stableford. Played on Blyth course. Red tees. The trophy competition is played alongside the monthly stableford.

ELIGIBILITY:

Open to past & present Captains of Halesworth Golf only. Ladies who have served as Captains' from other clubs are not eligible to enter. Current captain, or in her absence, the Ladies Competition Secretary, invites any past captains who may or may not still be members of the HG. The Ladies Vice Captain is eligible to play but cannot win the trophy. No requirement to have played three EG competitions in preceding twelve months

HANDICAP RESTRICTIONS:

None.

SIGN UP AS SHOWN ON IG:

Competition entry opens 3 weeks before competition date.

ENTRY FEE:

None, however, to compete in Stableford for prize money, current Stableford will be deducted from golf fees account.

OTHER INFORMATION:

Captains go out first, followed by the Stableford competition.

Captains have lunch, the wine is paid for out of ladies' funds organised by the current captain, or in her absence, the Ladies Competition Secretary.



Winner: Past and Present Captain's Trophy, no replica. Trophy presented on the day.

No prize money for trophy winner. Prize money, dependant on number of entries, awarded to winners and runners up of bronze and silver division of stableford competition, and credited to golf fees account in accordance with current Stableford prize rules.

IG competition settings will show winners of the stableford competition, results for the trophy competition will be manually capped and final results calculated by the Ladies' Competition Secretary.

Club Championship
Johnny Johnson Trophy – (best gross score)
Trophy donated by Johnny Johnson

Originals Cup (best net score)
Trophy donated by Original lady members

DATE:

Annual: August

FORMAT:

36 hole (1x18, 1x 18) strokeplay. Medal. Played on Blyth course. Red tees. 95% playing handicap. Tee times are allocated in handicap order.

In the event of a tie after 36 holes:

- Gross competition. There will be a 'sudden death' playoff for the Championship (scratch) using holes 1,2 and 10, repeated if necessary. This will be played on the Blyth course
- Nett competition. Result will be calculated using countback.

HANDICAP RESTRICTIONS:

For trophy competitions the handicap limit is set by Ladies Committee.

Ladies Red Tees. Handicap index: 32.4 – 33.2. Course handicap 36.

Ladies with higher handicaps may enter trophy competition but will be capped at maximum course handicap of 36.

SIGN UP AS SHOWN ON IG:

Competition entry opens 4 weeks before competition date.

OTHER INFORMATION:

Players are eligible to win both the Johnny Johnson Trophy and the Originals Cup.

Prizes: 1st and 2nd gross and 1st and 2nd nett.

Trophies: Best gross score, Johnny Johnson
Best nett score, Originals Cup

Trophies presented at club AGM.

Replica trophies for both competitions.

Prize money to winners of gross and nett competitions and credited to golf fees accounts.



Johnny Johnson Trophy

Originals Cup



Summer Eclectic

Trophy Donated by Evelyn and Ron Jamieson

Winter Eclectic

Trophy Donated by Evelyn and Ron Jamieson

DATE:

Annual: Summer: 1st April – 30th September

Winter: 1st October – 31st March

FORMAT:

The winner is determined by adding all the lowest scores achieved on each hole over all the rounds. Ladies must **OPT IN** to each of the Eclectic by adding their name to the sheet on the board in the ladies' changing room.

Once signed up, the entrance fee will be charged and cannot be refunded.

The first round of the Eclectic must be a ladies' EG medal or stableford (They must putt out if they start with a Stableford!) Ladies are not restricted to submit their first eclectic score at the start of the season providing they putt out as mentioned in previous point. Thereafter, partial cards are accepted, as long as they are played on a Thursday or Sunday under competition rules.

They can include general play cards on those days, marked by a lady member only.

Please write "Eclectic" on your card and place it in the cage found in the first cupboard on left opposite basins

The last day for submitting scores is:

Summer: 30th September Winter: 31st March

The handicap allowance is 5/8 of final Course handicap on 30th September (Summer) and 31st March (Winter).

ELIGIBILITY:

All ladies.

HANDICAP RESTRICTIONS:

Maximum Course handicap 45.

OTHER INFORMATION:

Winner Summer Eclectic: Summer eclectic Trophy. Replica trophy.

Winner Winter Eclectic: Winter Eclectic Trophy. Replica trophy.

Prize money awarded to top four lowest scores, dependant on number of entries, and credited to club card as 50% to 1st, 25% to 2nd, 15% to 3rd and 10% to 4th place.

Winter eclectic



Summer Eclectic



Gilly Bogey Trophy

Trophy donated by: Daphne Gill

DATE:

Annual: April

FORMAT:

18-hole Bogey match competition play against the course. Played on Blyth course. Red tees. 100% course handicap.

HANDICAP RESTRICTIONS:

For trophy competitions the handicap limit is set by Ladies Committee.
Ladies Red Tees. Handicap index: 32.4 – 33.2. Course handicap 36.
Ladies with higher handicaps may enter trophy competition but will be capped at maximum course handicap of 36.

SIGN UP AS SHOWN ON IG:

Competition entry opens 3 weeks before competition date.

OTHER INFORMATION:

Holes won should be marked on card with +, halved marked 0 and lost marked --.
Scores should also be recorded for handicap purposes



Gilly Bogey trophy. No prize money for trophy winner. Prize money awarded to bronze and silver division winners and runners up, dependant on number of entries, credited to golf fees account
Fee based on current qualifier fees.

Goldsmith Bowl
Trophy Donated by Rachael Goldsmith

DATE:

Annually April to October

FORMAT:

18 -hole medal play in conjunction with the monthly medal competitions. The Goldsmith Bowl will be awarded to the lowest aggregate GROSS score for the best 4 medal scores posted during the period during April through to October . Played on Blyth Course. Red tees.

ELIGIBILITY:

All ladies, however; entrants must have submitted scores from five EG Competitions, played during the preceding twelve months, from any club.

HANDICAP RESTRICTIONS:

Maximum handicap is 30.

SIGN UP AS SHOWN ON IG:

As per standard medal

OTHER INFORMATION:

In the event of a tie, the winner will be determined by the lowest gross score on the 4th card out the best 4 cards played between April to October.



Golfer of the Year
Trophy Donated by: Rosie Ward

DATE:
Annual

FORMAT:
Played in conjunction with ladies' EG Competitions and trophy competitions from 1st December- 30th November. Points awarded:
1st – 4 points
2nd – 3 points
3rd – 2 point
All ladies playing in competition will get 1 point for taking part. NR's will not be eligible

The putting trophies are not included.

COMPETITIONS ALSO INCLUDED:
Birdie tree
Summer eclectic
Winter eclectic
Single Knockouts

COMPETITIONS NOT INCLUDED:
Mixed tee individual comps
Mixed Trophy competitions

ELIGIBILITY:
All ladies

HANDICAP RESTRICTIONS:
As specified in individual competitions

ENTRY FEE:
None

OTHER INFORMATION:
Winner is the lady with the highest score. Ships decanter



Granny Trophy
Trophy donated by Marjorie Handley

DATE:

Annual: September

FORMAT:

18-hole strokeplay. Stableford. Played alongside September Stableford on Blyth course. Red tees. Eligible to all grannies and step-grannies.

ELIGIBILITY:

All grannies, step-grannies, however

HANDICAP RESTRICTIONS:

For trophy competitions the handicap limit is set by Ladies Committee.
Ladies Red Tees. Handicap index: 32.4 – 33.2. Course handicap 36, however, ladies playing in the stableford competition will not have a handicap restriction. Ladies with higher handicaps may enter trophy competition but will be capped at maximum course handicap of 36.

SIGN UP AS SHOWN ON IG:

Competition entry opens 3 weeks before competition date.

OTHER INFORMATION:

Agreed at committee in 2018, grannies will not go out first, the field will be mixed.

Winner: Granny with highest stableford score. Granny trophy. Replica trophy.

No prize money for trophy winner. Fees and prize money as defined by Qualifier competition rules, awarded to winners and runners up of bronze and silver division of stableford competition, and credited to golf fees account.

IG competition settings will show winners of the stableford competition, results for the trophy competition will be manually capped and final results calculated by the Ladies' Competition Secretary



Hall Candlestick Foursomes
Trophy Donated by Janet Hall

DATE:

Annual: May

FORMAT:

18 -hole foursomes strokeplay. Stableford. Played on Blyth Course. Red tees.
50% of combined team course handicap.

HANDICAP RESTRICTIONS:

For trophy competitions the handicap limit is set by Ladies Committee.

Ladies Red Tees. Handicap index: 32.4 – 33.2. Course handicap 36.

Ladies with higher handicaps may enter trophy competition but will be capped at maximum course handicap of 36.

SIGN UP AS SHOWN ON IG:

Competition entry opens 3 weeks before competition date.

OTHER INFORMATION:

Winner: Trophy, 2 Candlesticks

Prizes 50% across winners and first runners up – 2/3rd and 1/3rd



Harvest Medal
Trophy donated by: Rene Pearce

DATE:

Annual: October

FORMAT:

18-hole stroke play. Medal. Played on Blyth course. Red tees. Trophy competition played alongside the October Medal.

HANDICAP RESTRICTIONS:

For trophy competitions the handicap limit is set by Ladies Committee.

Ladies Red Tees. Handicap index: 32.4 – 33.2. Course handicap 36.

Ladies with higher handicaps may enter trophy competition but will be capped at maximum course handicap of 36.

Ladies playing in the October medal will have maximum score rules apply as per Ladies' medal rules, and will be capped at maximum course handicap 45.

SIGN UP AS SHOWN ON IG:

Competition entry opens 3 weeks before competition date.

OTHER INFORMATION:

Winner: Harvest Trophy. No prize money for trophy winner.

Prize money, dependant on number of entries, awarded to winners and runners up of bronze and silver division of medal competition in accordance with qualifier prize rules and credited to golf fees account.

IG competition settings will show winners of the medal competition, results for the trophy competition will be manually capped and final results calculated by the Ladies' Competition Secretary.



Jay Oldknow Mixed Knockout Trophy

Donated by Jay Oldknow

DATE

Annual: Played over the summer months running from 1st April to 30th September

FORMAT

18-hole mixed 4BBB match play. Played on Blyth Course, Ladies red tees, score using red stroke index and Men/Juniors white tees, score using red stroke index. Handicap allowance: 90% of difference between full handicaps, shots are to be taken from the lowest handicap of the 4 players.

All players to use ladies' stroke index when allocating shots.

The match is played over 18 holes, if the match is drawn after 18 holes, play must continue to a 'sudden death result'.

HANDICAP RESTRICTIONS

For trophy competitions the handicap limit is set by Ladies Committee

Ladies Red Tees. Handicap index: 32.4 – 33.2 Course handicap 36

Men White tees. Handicap index: 24.0 - 24.7. Course handicap 28

Golfers with higher handicaps may enter trophy competition but will be capped at maximum course handicap 36(Ladies), and 28(Men).

SCORE BALANCING SET BY IG FOR THIS COMPETITION

Red tees: stroke adjustment 0.5, Par 72, CR 71.8, SR 124

White tees: stroke adjustment 0, Par 72, CR 71.3, SR 130

SIGN UP AS SHOWN ON IG

Competition entry opens 4 weeks before competition start date and shuts one week before competition start date. Late entries will not be accepted.

OTHER INFORMATION

Prior to a pair playing their first match in Oldknow mixed knockout competition, in the event of one player being unable to play a replacement may be found. The replacement must be someone who has not already played (or conceded a match) in the competition. Replacements are not allowed once a pair has played a match (or had a match conceded). In addition, if one of the pairs cannot play, then their partner can play any match on their own– the shots are to be taken from the lowest handicap of the three players who are in attendance and playing the match.

If for any reason **bad light, bad weather or illness**, with agreement of all players, the match may be abandoned. The match will be resumed on another day (within the dates allowed) and will continue on the hole on which it was abandoned, and the score at that time will stand. It is the equal responsibility of both competitors to contact their opponent(s) to arrange the match, not less than **10 days** before the closing date for the round by mutual agreement, they must give **at least 3 dates**, one of which must be a weekend, preferably spaced throughout the allowed time period.

Each match must be completed by midnight of the appropriate round closing date, with no extensions allowed unless allowed by the Lady Captain for health reasons. If it is not possible to complete a match by the date shown, both competitor(s) will be scratched from the competition unless one competitor(s) voluntarily concedes.

Winners: Jay Oldknow trophy and engraved glasses or other suitable prize as agreed by the Ladies Committee to keep. Trophy presented at main club AGM. Runners up receive a prize as agreed by the Ladies Committee.



Ladies' invitation

This is intended as a guide only

DATE:

Annual: August

FORMAT:

18-hole 4BBB stableford. Best score to count on each hole.

Teams: 2 players consisting of 2 ladies.

Played on Blyth Course, Ladies red tees, score using red stroke index.

Handicap allowance: 100%

Or another format at the discretion of the committee.

ELIGIBILITY:

All Ladies

HANDICAP RESTRICTIONS:

None

ENTRY FEE:

Confirm annually with management

OTHER INFORMATION:

1st Tee reservation, if large field consider 2 tee start. Catering: Committee decision.

Prizes at discretion of organiser for visitors and Halesworth members.

Summer Knockout Lady President's Cup
Trophy donated by: Rosie Ward

DATE:

Annual: 1st April – 30th September

FORMAT:

18-hole Match play, knock out competition. If the match is drawn after 18 holes, play must continue to a 'sudden death result'.

Played on Blyth Course. Red tees. 100% difference of course handicap

HANDICAP RESTRICTIONS:

For trophy competitions the handicap limit is set by Ladies Committee.

Ladies Red Tees. Handicap index: 26.9-27.7. Course handicap 30.

However, Ladies with higher handicaps may enter trophy competition but will be capped at maximum course handicap of 30.

SIGN UP AS SHOWN ON IG:

Competition entry opens 4 weeks before competition start date and shuts one week before first round.

Late entries will not be accepted.

OTHER INFORMATION:

It is the equal responsibility of both competitors to contact their opponent(s) to arrange the match by mutual agreement, not less than **10 days** before the closing date for the round. They must give **at least 3 dates**, one of which must be a weekend, preferably spaced throughout the allowed time period.

Each match must be completed by midnight of the appropriate round closing date, with no extensions allowed unless allowed by the Lady Captain for health reasons. If it is not possible to complete a match by the date shown, both competitor(s) will be scratched from the competition unless one competitor(s) voluntarily concedes.

Winner: Lady President's Cup

Prize money: winner and runner up, depending on entry numbers, and credited to golf fees account

Lady Captain's Day

DATE	Annually – Normally September
FORMAT	Captains choice
ELIGIBILITY	All ladies
HANDICAP RESTRICTIONS	None
OTHER INFORMATION	Catering to be decided by lady captain, Captain buys 1 st prize, other prizes from entry fees, and depend on size of field

Land Salver
Trophy donated by Carol and Nick Land

DATE:

Annual: August Bank Holiday Monday

FORMAT:

18-hole mixed 3ball best ball stableford. Two best scores to count on each hole.

Teams: 3 players consisting of 1 lady and 2 men. Played on Blyth Course, Ladies red tees, score using red stroke index and Men white tees, score using white stroke index.

Handicap allowance: 85%. Each player must appear minimum of six times on the card marked under A, B and C

HANDICAP RESTRICTIONS:

For trophy competitions the handicap limit is set by Ladies Committee.

Ladies Red Tees. Handicap index: 32.4 - 33.2 Course handicap 36.

Men White tees. Handicap index: 24.0 – 24.7 Course handicap 28.

Golfers with higher handicaps may enter trophy competition but will be capped at maximum course handicap 36 (Ladies) and 28 (Men).

SCORE BALANCING AS SET BY IG FOR THIS COMPETITION:

Red tees: stroke adjustment +1.

Par 72, CR 71.8, SR 124

White tees: stroke adjustment 0

Par 72, CR 71.3, SR 130

SIGN UP AS SHOWN ON IG:

Competition entry opens 3 weeks before competition date.

OTHER INFORMATION:

If a player must withdraw from the competition due to illness or family emergency, then it is acceptable for another player to take their place on that day.

Each player must appear a minimum of 6 x times on the card, marked under A, B & C as agreed by Nick Land. Scores must NOT be altered once selected which scores count. Altered cards will be disqualified.

Winners: Land Salver. Presented at main AGM. No prize money.



Medal of Medals
(Waveney Windows Trophy)
Donated by Waveney Windows

DATE:

Annual: Sunday in July

FORMAT:

18-hole strokeplay. Medal. Played on Blyth course. Red tees.

ELIGIBILITY:

Open to all medal winners in both bronze and silver division from previous July through to end of June in the current year.

If any lady has won more than three medals in the qualifying year, then the runner up in the fourth medal become eligible

HANDICAP RESTRICTIONS:

For trophy competitions the handicap limit is set by Ladies Committee.

Ladies Red Tees. Handicap index: 32.4 – 33.2. Course handicap 36.

Ladies with higher handicaps may enter trophy competition but will be capped at maximum course handicap of 36.

SIGN UP AS SHOWN ON IG:

Competition entry opens 3 weeks before competition date.

OTHER INFORMATION:

Winner: Waveney Windows Trophy and replica trophy

Midsummer Madness

DATE	Annually in June
FORMAT	Saturday AM Teams of 3 stableford scoring Also individual prize Shot gun start between 5.30 to 6.30am. Lady Captain puts up sheet and does draw for tees
ELIGIBILITY	All members
HANDICAP RESTRICTIONS	Ladies: 36 Men:28
ENTRY FEE	Cost of breakfast + agreed amount
OTHER INFORMATION	Only one prize per player, Lady Captain buys the prizes using money from entry fees.

Millennium Plate incorporating Nielsen Putting Trophy

Millennium Plate trophy donated by Doreen Addison
Nielsen Putting Trophy donated by Alison Nielson

DATE:

Annual: May

FORMAT:

18-hole strokeplay. Medal scoring. Played on Blyth course. Red tees.

Millennium Plate incorporating Nielsen putting trophy is played alongside the May Medal. Number of putts made from on the green must be recorded by players during each medal round.

Putts from off the green do not count.

HANDICAP RESTRICTIONS:

For trophy competitions the handicap limit is set by Ladies Committee.

Ladies Red Tees. Handicap index: 32.4 – 33.2. Course handicap 36.

Ladies with higher handicaps may enter trophy competition but will be capped at maximum course handicap of 36.

SIGN UP AS SHOWN ON IG:

Competition entry opens 3 weeks before competition date.

OTHER INFORMATION:

Winner Millennium Plate: Player with highest medal score. Replica trophy.

Winner Nielsen putting trophy: Player with least number of putts.

No prize money for trophy winner.

Prize money, dependant on number of entries, awarded to winners and runners up of bronze and silver division of stableford competition, and credited to golf fees account.

IG competition settings will show winners of the stableford competition, results for the trophy competition will be manually capped and final results calculated by the Ladies' Competition Secretary



Mixed Open

This is intended as a guide only

DATE:

Annual: September

FORMAT:

18-hole mixed 4BBB stableford. Best score to count on each hole.

Teams: 2 players consisting of 1 lady and 1 man.

Played on Blyth Course, Ladies red tees, score using red stroke index and Men white tees, score using white stroke index.

Handicap allowance: 85%.

Each player must record a minimum of 4 scores on the card

ELIGIBILITY

Open to all Halesworth pairings and other clubs.

HANDICAP RESTRICTIONS:

For trophy competitions the handicap limit is set by Ladies Committee.

Ladies Red Tees. Handicap index: 32.4 - 33.2 Course handicap 36.

Men White tees. Handicap index: 24.0 – 24.7 Course handicap 28.

Golfers with higher handicaps may enter competition but will be capped at maximum course handicap 36 (Ladies) and 28 (Men).

SCORE BALANCING AS SET BY IG FOR THIS COMPETITION:

Red tees: stroke adjustment +1.

Par 72, CR 71.8, SR 124

White tees: stroke adjustment 0

Par 72, CR 71.3, SR 130

OTHER INFORMATION:

Day is arranged by management. Office sends out posters to other clubs.

Visitors and Halesworth members: 1st and 2nd prize. Best front 9 and best back 9.

Longest drive and nearest the pin for both ladies and men. Captain and Lady Captain may take part if they wish, however: should be there to present prizes

Most Improved Lady Golfer
Trophy Donated by: Mary-Anne Miles

DATE:

Annual: 1st December – 30th November

FORMAT:

Trophy to be presented to the most improved lady golfer in the Bronze section (Handicap Index 24.2 and above), the lady who has the biggest reduction in their handicap during the year.

In event of a draw, the committee decide who has been the most committed player during the year.

ELIGIBILITY:

All Ladies playing in the Bronze Division, Handicap Index 24.2 and above.

HANDICAP RESTRICTIONS:

The handicap limit was set by Mary-Anne Miles.

Ladies with handicap index of 24.1 or lower are not eligible to win this trophy.

OTHER INFORMATION:



Winner: Most improved Golfer Trophy and replica trophy.

Pearce Trophy
Trophy donated by Rene and Peter Pearce

DATE:

Annual: September

FORMAT:

18-hole mixed 3ball best ball stableford. Two best scores to count on each hole. Teams: 3 players consisting of 1 lady and 2 seniors. However, due to the number of senior members, it is possible for the Competition Secretary/Ladies Committee to decide to change this to be 4 players consisting of 1 lady and 3 seniors. Each player must appear minimum of six times on the card

Sign up as individuals and playing partners are drawn week before the competition. Tee times assigned by Administrator.

Played on Blyth Course, Ladies red tees, score using red stroke index and Men yellow tees, score using yellow stroke index

Handicap allowance: 85%

ELIGIBILITY:

Ladies/Seniors, however; all entrants must have submitted scores from three EG qualifying competitions, played during the preceding twelve months, from Halesworth Golf.

HANDICAP RESTRICTIONS:

For trophy competitions the handicap limit is set by Ladies Committee.

Ladies Red Tees. Handicap index: 32.4 – 33.2 Course handicap 36.

Men White tees. Handicap index: 24.0 - 24.7. Course handicap 28.

Golfers with higher handicaps may enter trophy competition but will be capped at maximum course handicap 36 (Ladies) and 28 (Men).

SCORE BALANCING SET BY IG FOR THIS COMPETITION

Red tees: stroke adjustment +1

Par 72, CR 71.8, SR 124

White tees: stroke adjustment 0

Par 72, CR 71.3, SR 130

SIGN UP AS SHOWN ON IG:

Competition entry opens 4 weeks before competition start date and shuts one week before competition start date. Late entries will not be accepted

OTHER INFORMATION:

Set as individual entry competition entry for sign up purposes only. Draw for playing partners one week before competition date. Teams of three comprising of one lady and two seniors (one low h/c and one higher h/c). Each player must appear minimum of six times on card (as agreed with Rene Pearce).

If a player must withdraw from the competition due to illness or family emergency, then it is acceptable for another player to take their place on that day.

Winners: Pearce Trophy. Replica trophy. Trophy presented at main AGM.



Queen's Platinum Jubilee Memorial Cup
donated by Ladies' Section

Date:

June if possible.

Format:

18-hole strokeplay. Stableford. Blyth course. Red tees. Qualifier. 95% handicap

HANDICAP RESTRICTIONS:

For trophy competitions the handicap limit is set by Ladies Committee.

Ladies Red Tees. Handicap index: 32.4 – 33.2. Course handicap 36.

Ladies with higher handicaps may enter trophy competition but will be capped at maximum course handicap of 36.

SIGN UP AS SHOWN ON IG:

Competition entry opens 3 weeks before competition date.

OTHER INFORMATION:

Trophy: Engraved Vase.



Rosemary Ward Putting Trophy
Trophy Donated by Rosemary Ward

DATE:

Annual: Suggested that it is played June, July, September & October Medals.

FORMAT:

Number of putts made from on the green must be recorded by players during each medal round. Putts from off the green do not count.

Best 3 out of 4 putting rounds to count for results.

ELIGIBILITY:

All ladies with submitted scores from five EG Competitions, played during the preceding twelve months, from Halesworth Golf. Ladies may play in the Medal but will not be eligible to win the trophy without the qualifying cards.

Ladies may play in the putting competition on both medal days (Thursday and Sunday) but only one of the days' scores will count towards the trophy. Ladies need to specify in advance to the Lady Competition Secretary which day they wish the medal score to count and the number of putts will be allocated towards the trophy. If none is selected then by default the first score will apply for the trophy.

HANDICAP RESTRICTIONS:

None.

SIGN UP AS SHOWN ON IG:

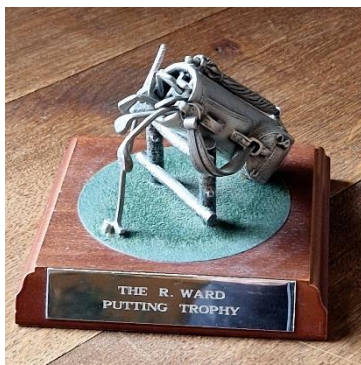
Competition entry opens 3 weeks before competition date.

OTHER INFORMATION:

Note: Need to ensure September date avoids scheduled greens maintenance.

Overall lowest putting score based on the best 3 out of 4 rounds.

Winner: Rosemary Ward Putting Trophy.



Scott Salver

Best Gross Score
Trophy donated by Sidi Scott

Sidi Scott Bud Vase

Best Nett Score
Trophy donated by Sidi Scott

DATE:

Annual: to be played late August or early September. Date to be dictated by need to avoid scheduled autumn greens maintenance.

FORMAT:

18-hole strokeplay. Medal. Played on Blyth course. Red tees. Two trophy competitions played alongside the September Medal.

Scott Salver is awarded for best gross score. Sidi Scott Bud Vase is awarded to best nett score

HANDICAP RESTRICTIONS:

For trophy competitions the handicap limit is set by Ladies Committee.

Ladies Red Tees. Handicap index: 32.4 – 33.2. Course handicap 36.

Ladies with higher handicaps may enter trophy competition but will be capped at maximum course handicap of 36.

Ladies playing in the September medal will have maximum score rules apply as per Ladies' medal rules, and will be capped at maximum course handicap 45.

SIGN UP AS SHOWN ON IG:

Competition entry opens 3 weeks before competition date.

OTHER INFORMATION:

Winner best gross score: Scott Salver. Replica trophy.

Winner best nett score: Sidi Scott Bud Vase

No prize money for trophy winner. Prize money, dependant on number of entries, awarded to winners and runners up of bronze and silver division of medal competition, and credited to golf fees account.

IG competition settings will show winners of the medal competition, results for the trophy competition will be manually capped and final results calculated by the Ladies' Competition Secretary.



Sunday Trophy

Trophy donated by Carolyn Taylor

DATE:

Annual: Sunday in August

FORMAT:

18-hole strokeplay. Stableford. Played on Blyth course. Red tees. Handicap allowance: 100% playing handicap

HANDICAP RESTRICTIONS:

For trophy competitions the handicap limit is set by Ladies Committee.

Ladies Red Tees. Handicap index: 32.4 – 33.2. Course handicap 36.

Ladies with higher handicaps may enter trophy competition but will be capped at maximum course handicap of 36.

SIGN UP AS SHOWN ON IG:

Competition entry opens 3 weeks before competition date.

OTHER INFORMATION:

No prize money for trophy winner. Trophy presented by Mrs Carolyn Taylor, giving Sunday players a trophy to play for; however, all ladies are eligible to play



Ladies Summer pairs knockout

Trophy Donated by Lynda Baldry and Mary Pickering

DATE

Annual: Played over the summer months running from 1st April to 30th September

FORMAT

Greensomes.

100% Handicap

The match is played over 18 holes, if the match is drawn after 18 holes, play must continue to a 'sudden death result'.

HANDICAP RESTRICTIONS

None

SIGN UP AS SHOWN ON IG

Competition entry opens 4 weeks before competition start date and shuts one week before competition start date. Late entries will not be accepted.

Prizes

Trophy.

Prizes as agreed



Ladies Super Seniors Championship

Trophy Donated by: Chris Van de Velp

DATE	Annual: August On Club Championship Day
FORMAT	18-hole strokeplay. Stableford. Played on Blyth course. Red tees. If the match is drawn after 18 holes, play must continue to a 'sudden death result'. 100% Handicap Qualifier
ELIGIBILITY	Ladies aged 65 and over.
HANDICAP RESTRICTIONS	For Super Seniors Trophy the handicap limit is set by Ladies Committee and agreed with Chris V D Velde 2020. Ladies Red Tees. Handicap index: 36.0 – 36.9, Course handicap 40, however, ladies with higher handicaps may enter trophy competition but will be capped at maximum course handicap of 40.
SIGN UP AS SHOWN ON IG	Competition entry opens 3 weeks before competition date.
OTHER INFORMATION	Trophy and Replica trophy for winner. Ladies tee off late morning which allows them to finish mid-afternoon so winners competing in this and the main Club Championships can be announced together



Williams Cup

Trophy Donated by Nobby and Vic Williams

DATE:

Annual: July/August

FORMAT:

A mixed 4ball best ball Stableford, three best scores to count on each hole incorporating an individual stableford for the juniors. Teams: 4 players consisting of 1 lady, 1 senior, 1 Gent and 1 Junior.

Course: at discretion of Junior Co-ordinator.

Junior tee: at discretion of Junior Co-ordinator.

Blyth Course: Ladies red tees, score using red stroke index and Men white tees, score using white stroke index.

Valley Course: Ladies red tees, score using red stroke index and Men Yellow tees, score using yellow stroke index.

Handicap allowance 100%.

Qualifier for Juniors

ELIGIBILITY:

Ladies, Gents, Seniors and Juniors (18 or under).

HANDICAP RESTRICTIONS:

For trophy competitions the handicap limit is set by Ladies Committee.

Ladies: Maximum course handicap 36.

Men: Maximum course handicap 28.

Juniors: Maximum course handicap reviewed annually

Golfers with higher handicaps may enter trophy competition but will be capped at maximum course handicap 36 (Ladies) and 28 (Men).

Juniors without a handicap will be assessed by the Junior co-ordinator and assigned an appropriate course handicap.

SIGN UP AS SHOWN ON IG:

Competition entry opens 3 weeks before competition date.

Junior Co-ordinator advertises the competition and encourages entry within the junior section.

OTHER INFORMATION:

The format to be assessed each year in consultation with Junior co-ordinator. Juniors' scores need to be recorded separately to determine the winner of junior stableford.

Winning team wins the larger trophy, the junior stableford winner wins the smaller trophy. Trophy presented at main AGM. Prizes bought by the Men and Ladies sections (authorised by P. Kent Club Captain) The shop may contribute as well for 1st & 2nd junior.

If a player must withdraw from the competition due to illness or family emergency, then it is acceptable for another player to take their place on that day.



Winter Knockout
Spirit of Ecstasy
Trophy Donated by Evelyn and Ron Jamieson

DATE:

Annual: 1st October – 31st March

FORMAT:

18-hole Match play, knock out competition. Played on Blyth Course. Red tees.
100% difference of course handicap

HANDICAP RESTRICTIONS:

For trophy competitions the handicap limit is set by Ladies Committee.
Ladies Red Tees. Handicap index: 32.4 – 33.2. Course handicap 36.
Ladies with higher handicaps may enter trophy competition but will be capped at maximum course handicap of 36.

SIGN UP AS SHOWN ON IG:

Competition entry opens 4 weeks before competition start date and shuts one week before competition start date. Late entries will not be accepted

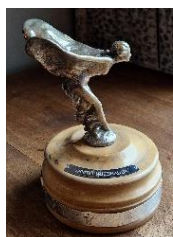
OTHER INFORMATION:

It is the equal responsibility of both competitors to contact their opponent(s) to arrange the match, not less than **10 days** before the closing date for the round by mutual agreement, they must give **at least 3 dates**, one of which must be a weekend, preferably spaced throughout the allowed time period.

Each match must be completed by midnight of the appropriate round closing date, with no extensions allowed unless allowed by the LC for health reasons. If it is not possible to complete a match by the date shown, both competitor(s) will be scratched from the competition unless one competitor(s) voluntarily concedes.

Winner: Spirit of Ecstasy. Replica trophy

1st prize & runner up vouchers dependent on number of entries



Withey Cup
Trophy donated by Peter Withey

DATE:

Annual: May Bank Holiday

FORMAT:

18-hole mixed 4BBB Stableford with the best score to count on each hole. Played on Blyth Course. Ladies red tees, score using red stroke index. Men white tees, score using white stroke index. Handicap allowance: 85%.

HANDICAP RESTRICTIONS:

For trophy competitions the handicap limit is set by Ladies Committee
Ladies Red Tees. Handicap index: 32.4 – 33.2 Course handicap 36
Men White tees. Handicap index: 24.0 - 24.7. Course handicap 28
Golfers with higher handicaps may enter trophy competition but will be capped at maximum course handicap 36(Ladies) and 28(Men).

SCORE BALANCING SET BY IG FOR THIS COMPETITION

Red tees: stroke adjustment +1

Par 72, CR 71.8, SR 124.

White tees: stroke adjustment 0

Par 72, CR 71.3, SR 130.

SIGN UP AS SHOWN ON IG:

Competition entry opens 3 weeks before competition date.

OTHER INFORMATION:

If a player must withdraw from the competition due to illness or family emergency, then it is acceptable for another player to take their place on that day. Juniors may enter if they have a playing partner.

Winner: Withey cup. Presented at main AGM. Financial prizes will be awarded based on the number of entries on the day.

